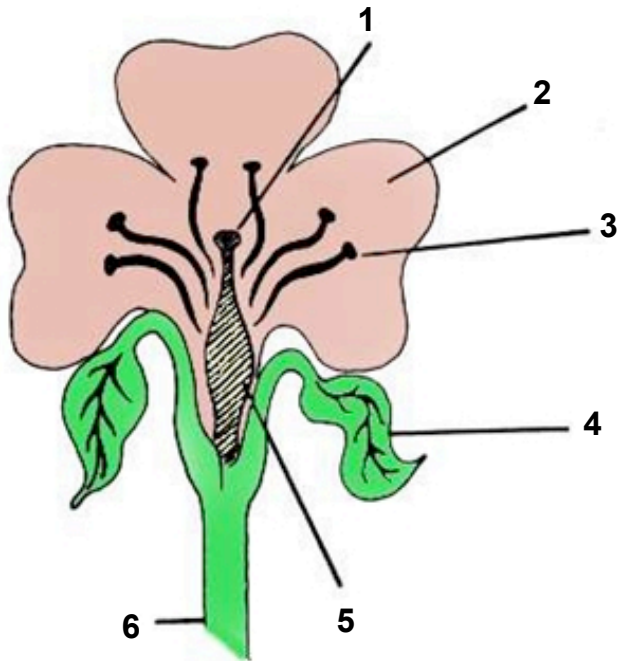


1st qtr. SCIENCE Pre/Post 4th

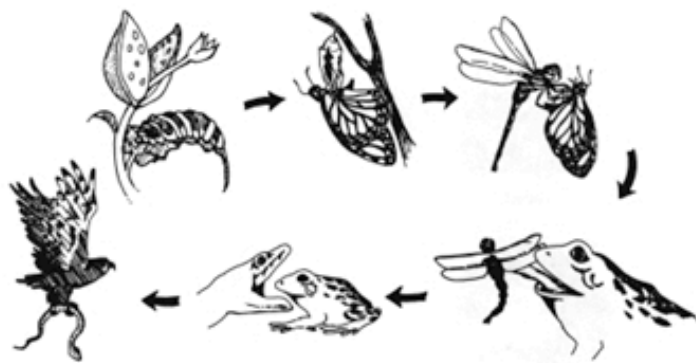
For the following items, use this diagram of a flower to answer each question.



1. The part of the plant that carries water and minerals from the ground is at point

- A) 1.
- B) 5.
- C) 3.
- D) 6.

For the following items, use the information below and what you have learned about science to answer each question.



2. The living thing in this drawing that makes its own food is the

- A) caterpillar.
- B) dragonfly.
- C) milkweed plant.
- D) snake.

For the following items, read the question and choose the best answer.

3. Different populations within a community depend on each other for all of the following *except*

- F) water.
- G) food.
- H) shelter.
- J) protection.

4. Green plants make their own food using sunlight, water, chlorophyll, and

- A) hydrogen.
- B) helium.
- C) carbon dioxide.
- D) nitrogen.

5. The gas that people need to breathe in order to live is

- F) nitrogen.
- G) oxygen.
- H) hydrogen.
- J) helium.

6. Your \_\_\_\_\_ are important because they give you shape and protect your heart, lungs, and other organs.

- A) nerves
- B) bones
- C) muscles
- D) senses

7. Your skin does all of the following *except*

- a) gives your body shape.
- G) protects you from germs.
- H) keeps you warm.
- d) senses pain and pressure.

8. Your blood does all these things except

- A) digest food.
- B) carry nutrients.
- C) carry oxygen.
- D) carry germ fighters.

9. Which of the following plants do *not* have seeds?

- F) ferns
- G) tulips
- H) corn
- J) lilies

10. Which of these is a mammal?

- A) a bird
- B) an alligator
- C) a dog
- D) a fish

11. What is the difference between humans and amphibians?

- F) Amphibians are not able to live any part of their lives on land.
- G) Humans cannot swim.
- H) Humans are not able to live any part of their lives in water.
- d) There is no difference.

12. Which of these is a cold-blooded animal?

- A) a robin
- B) a frog
- C) a squirrel
- D) a polar bear

13. Mammals are animals that usually have hair or fur on their bodies. They also feed their babies milk. Which animal shown here is *not* a mammal?

F



G



H



J



14. Humans are called the only animals with true intelligence because they can

- A) see and hear.
- B) remember.
- C) learn to read and write.
- D) walk on two legs.

15. Which animal is a carnivore?

- A) a squirrel
- B) a cow
- C) a wolf
- D) a lamb

16. By what process do plants make food?

- F) photosynthesis
- G) pollination
- H) germination
- J) respiration

17. Wolves live together in groups called

- A) packs.
- B) dens.
- C) herds.
- D) schools.

18. Which of the following products are grown from seeds?

- F) strawberries
- G) rye
- H) grapes
- J) all of the above