



SCHOOL PERFORMANCE REPORT CARD

SY 2011-2012

Upi Elementary School

Superintendent of Education Jon J.P. Fernandez
 SY 2011-2012 Interim Superintendent Taling Taitano
 School Principal Beverly San Agustin



SCHOOL CHARACTERISTICS

ENROLLMENT **857**

AVERAGE DAILY ATTENDANCE **796.92**

AVERAGE DAILY MEMBERSHIP **858.72**

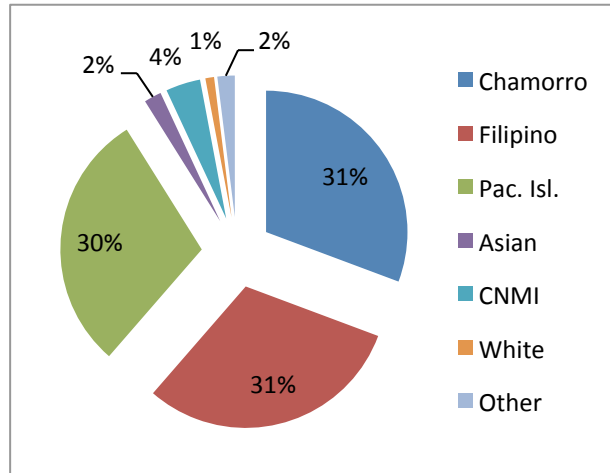
AVERAGE DAILY RATES **92.61%**

STUDENT ENROLLMENT BY GRADE

K	1ST	2ND	3RD	4TH	5TH
138	125	152	155	125	162

STUDENT DEMOGRAPHICS

STUDENT ETHNIC DISTRIBUTION



ADDITIONAL DEMOGRAPHIC INFORMATION

ENGLISH LEARNERS **56%**

FREE & REDUCED LUNCH **84%**

STUDENTS ELIGIBLE TO RECEIVE SPECIAL EDUCATION SERVICES **3%**

STUDENT SUSPENSION RATE **0%**

RESOURCES INFORMATION

School Personnel Resources

POSITION	NO. OF EMPLOYEES	% OF TOTAL	ATTENDANCE RATE	ABSENTEE RATE
ADMINISTRATORS	2	.02%	92%	8%
TEACHERS	71	.81%	93%	7%
HEALTH COUNSELORS	1	.01%	94%	6%
PROF. / ANCILLARY	0	0%	0%	0%
INSTRUCTIONAL AIDES	0	0%	0%	0%
SUPPORT STAFF	12	.14%	95%	5%
CUSTODIAL/MAINT.	2	.23%	88%	12%
TOTAL	88		94%	6%

FROM THE PRINCIPAL

EXEMPLARY PROGRAMS

Positive Behavior Incentive Support (PBIS). The Totots Zeroing in Positive Students or TOPS Program was initiated by faculty and support staff due to increasing disciplinary referrals. With a 12% disciplinary rate at the beginning of the school year, the TOPS program was implemented and the rate decreased to 6%. Student disciplined significantly declined by 58% compared to last school year.

Newcomer's Center. The Newcomer's Center was provided for the ESL and migrant learners enrolled in school for less than a year and the program's goal is to increase their English proficiency and academic success. Parents were invited to join and learn with their children during summer.

Direct Instruction. At the end of SY2011-2012, 79% of kindergarten students are reading at the early 2nd grade level; more than 50% of 1st grade students are reading at the early 3rd grade level; more than 50% of 2nd grade students are reading at early 4th grade level; more than 50% of 3rd grade students are reading at early 5th grade level; 44% of 4th grade students are reading at early 6th grade level; and 69% of 5th grade students completed 6th grade reading and are placed in middle school level literature-based reading program.

SPECIAL AWARDS

COMMUNITY PARTNERSHIPS

|||

ACCOMPLISHMENTS

Parent-Teacher Community Conference|HSC25 Squadron
 (Navy Helicopter Sea Combat Pilots|TRUST Program)

SCHOOL- WIDE EXPENDITURES Note: Unaudited data as of 10.23.12

OBJECT CATEGORY	Salaries	\$2,741,872.30
	Benefits	\$966,074.23
	Travel	\$-0-
	Contractual	\$105,346.77
	Supplies / Materials	\$17,197.39
	Equipment	\$274,707.69
	Utilities	\$24,948.20
	Capital Outlay	\$-0-

PROGRESS: ARE STUDENTS MAKING SUFFICIENT PROGRESS?

Upi Elementary is making progress in the subject areas from the following grade levels:
 Grade 4 complete battery indicates our students are on the average range. The total percentage of students in proficient and advance levels (3 & 4) increased in Reading, Language and Math.
 Grade 2 students made significant gains in Science as compared to the national from 1st to 2nd grade cohort group.
 Grade 3 students made significant gains in Language as compared to the national from 2nd to 3rd grade cohort group.
 Grade 4 students made significant gains in Reading, Math & Social Studies as compared to the national from 3rd to 4th grade cohort group. The total percentage of students in proficient and advance levels (3 & 4) increased in Reading and Math.
 Grade 5 students made significant gains in Reading, Language & Science as compared to the national from 4th to 3rd grade cohort group.

ENVIRONMENT: IS THE SCHOOL ENVIRONMENT SUPPORTING STUDENTS, TEACHERS, & FAMILIES?

The school environment supports students, teachers and families through the following in school and extra curricular activities and accomplishments:

- Health and Safety Task Force “A” rating for Cafeteria and School Campus
- Daily breakfast and lunch served daily
- Perfect Attendance, Honor Roll & SAT-10 awards
- Parent, Student, Faculty and Staff ESLR awards
- Student Activities/Performances (United Nations, Career Week, Author’s Visits, & Christmas Program)
- Faculty and Staff Appreciation Event
- Academic Competitions (Box tops collection, Poster and essay, Science fair, Geography Bee, Math Olympiad, Read-a-thon, Spelling Bee and Chamorro Language competitions)
- Positive Behavioral Intervention System: Bi-weekly awards on Behavioral Expectations (Safe, Responsible & Respectful)
- Tutoring and Library Services
- Monthly School Clean-up
- Family Math Night
- Go Green Club activities: recycling, gardening & farming and clean up
- Families and Students Together (FAST) Workshop
- Community parent teacher conferences
- Sponsor a student through Totots Reaching Upi Students Together (TRUST) Committee.
- Monthly PTO Meetings and activities (5K Run/Walk and School Carnivals)

Emergency Evacuation Drills (Earthquake, Fire, and Lock Down)

OUTCOMES: WHAT ARE STUDENTS ACCOMPLISHING?

- Students are accomplishing the prescribed Direct Instruction Curricular requirements to reach at or above benchmark levels. (See exemplary program results)
- Students are accomplishing prioritized SAT-10 skills in alignment with the GDOE content standards through quarterly pre/posttest assessments in Math, Language, Science and Social Studies to increase students performing at Proficient and Advance Levels.

Students are accomplishing to be safe, responsible and respectful by decreasing student discipline and attendance rate.

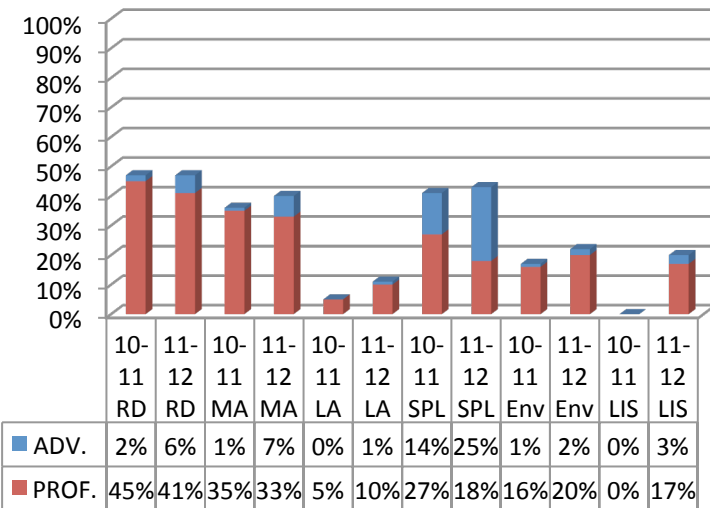
The SAT10 performance standards are content-referenced scores that reflect what students know and should be able to do in given subject areas. As a norm-referenced test, student scores are compared to the performance of a norm group, comprised of a national sample.

Performance Levels

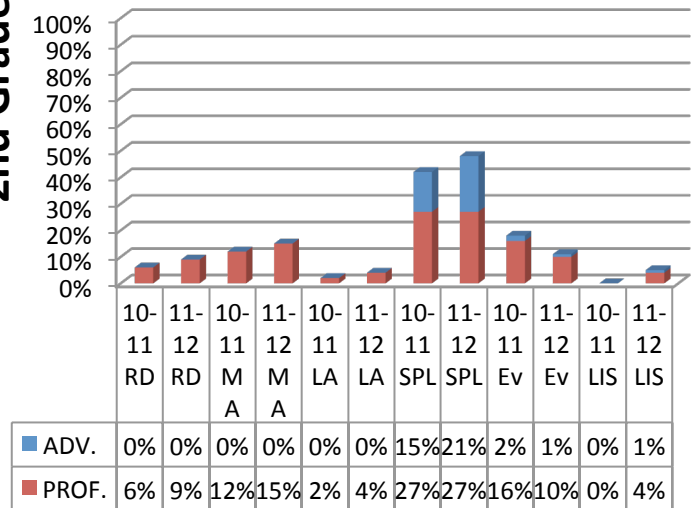
Level 3, Proficient Represents **solid academic performance** indicating students are prepared for the next grade
 Level 4, Advanced Signifies **superior performance** beyond grade-level mastery

Source: SAT 10

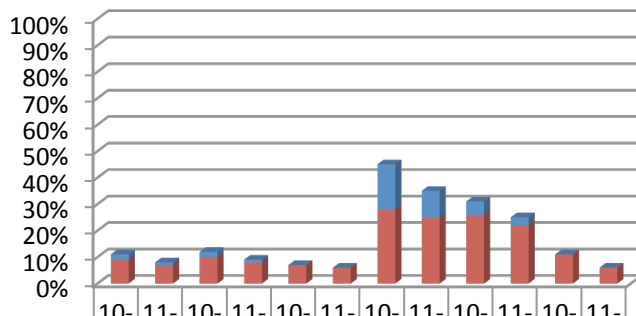
1st Grade



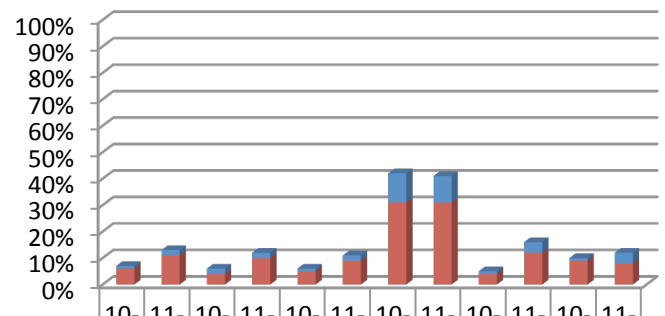
2nd Grade

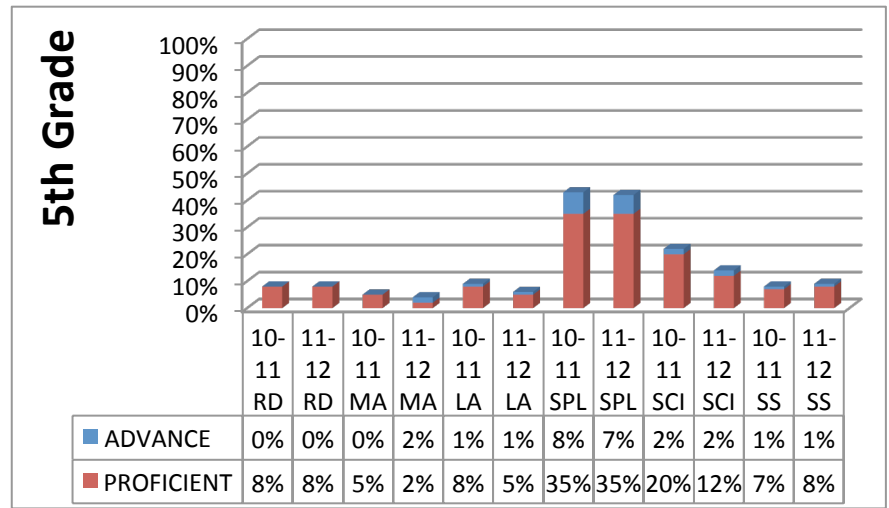


3rd Grade



4th Grade





STUDENT ACHIEVEMENT 17GCA Chapter 3, §3106(b)(6) Comprehensive Testing Program (CTP)

PERFORMANCE CLASSIFICATION

SAT10 Proficient & Advanced Levels	School Data	P.L. 26-26 Grade Classification
SAT10 Grade 1 – Reading	47%	Low
SAT10 Grade 1 – Math	40%	Low
SAT10 Grade 1 – Language	11%	Low
SAT10 Grade 2 – Reading	9%	Unacceptable
SAT10 Grade 2 – Math	15%	Low
SAT10 Grade 2 – Language	4%	Unacceptable
SAT10 Grade 3 – Reading	8%	Unacceptable
SAT10 Grade 3 – Math	9%	Unacceptable
SAT10 Grade 3 – Language	6%	Unacceptable
SAT10 Grade 4 – Reading	13%	Low
SAT10 Grade 4 – Math	12%	Low
SAT10 Grade 4 – Language	11%	Low
SAT10 Grade 5 – Reading	8%	Unacceptable
SAT10 Grade 5 – Math	4%	Unacceptable
SAT10 Grade 5 – Language	6%	Unacceptable
5th grade Promotion Rate	100%	Exceptional
Student Discipline/ Suspension Rate	0%	Exceptional
Employee Attendance Rate	94%	Satisfactory
School Improvement Plan	100%	Exceptional
COMPOSITE SCORE / GRADE	54.12%	Satisfactory

School Administrators

Principal Beverly San Agustin
 Assistant Principal Jonalyn Ceria

President	Frankie Lake
Vice President	Ito McCord
Secretary	Chicka Manibusan
Treasurer	Marc LaPlante
PIO	Lorna Fiona

Upi Elementary empowers all students to be academically, socially and technologically prepared for a successful future as productive and respectful citizens of our local and global community.

Upi Elementary School
P. O. Box DE
Agana, Guam 96930
(671)633-1382/1371



School Colors: Green &
Khaki

Mascot: Totots